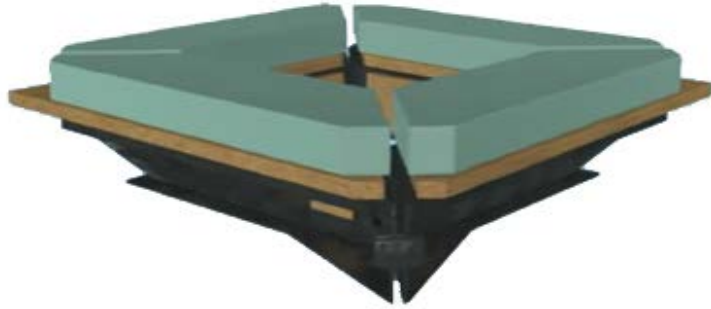


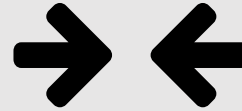
Enhanced Pile Clamp System

OUR PRODUCT

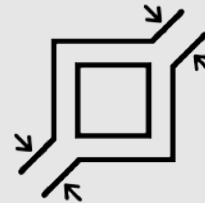
The Enhanced Pile Clamp System offers significant benefits when compared with traditional marine pile repair techniques.



Speeds clamp and form installation time— commercial diving firm installed the clamp/form base in 3 minutes.



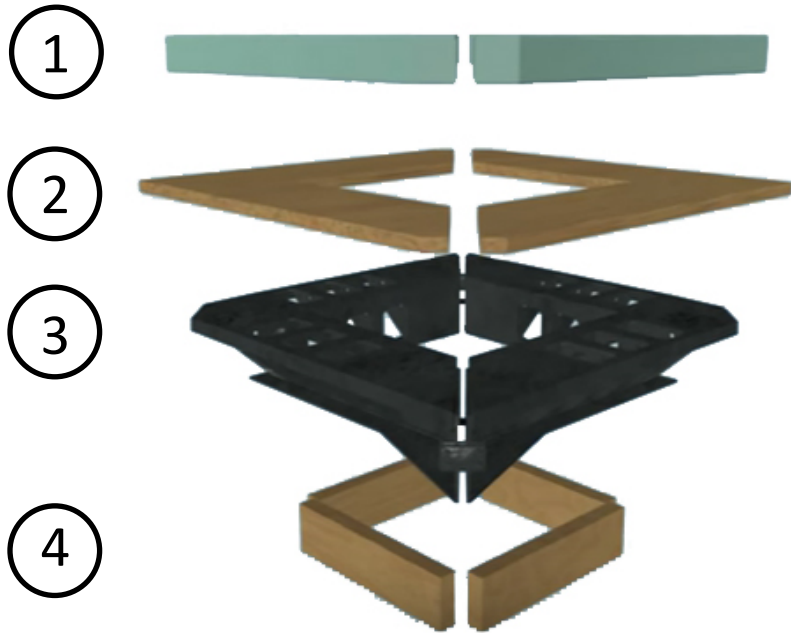
Provides a constant, high clamping force to prevent slippage when jacket is filled



Eliminates leakage of concrete and epoxy by providing good alignment between the jacket and the clamp platform.

Installs in 3 minutes and saves up to \$1000 for each pile repaired!

THE DESIGN



The clamp's four primary components are:

- ① **Flotation/Sealing Surface**
- ② **Wooden Platform**
- ③ **Metal Clamp**
- ④ **Friction Surface**

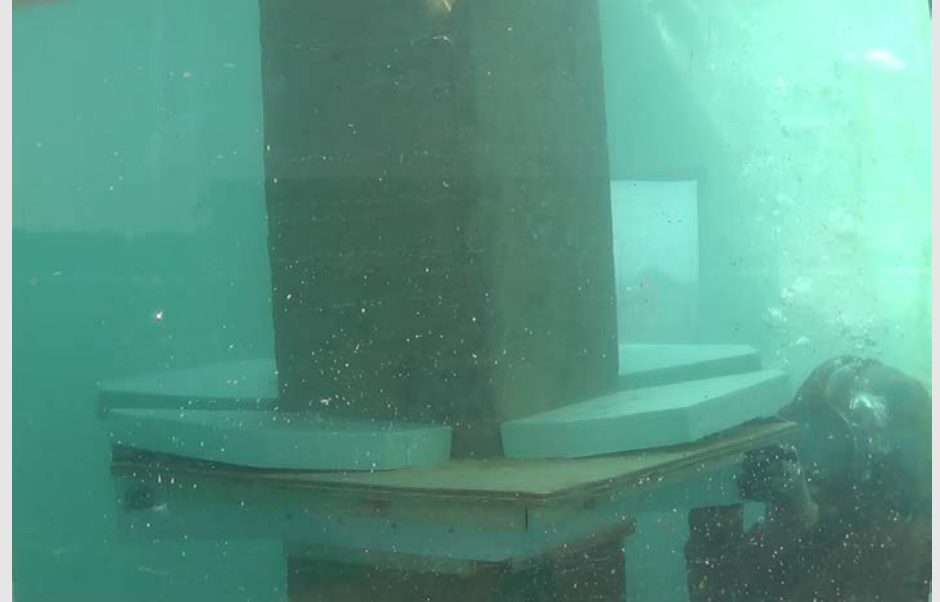
The clamp is pre-assembled in a dry environment, and provides all the force needed to support a jacket and the entire concrete load.

HOW IT WORKS

The clamp assembly is hinged and neutrally buoyant, allowing a single diver to easily and quickly maneuver the clamp into position and bolt it in place.

The platform self-aligns to the pile, preventing leakage when concrete is poured.

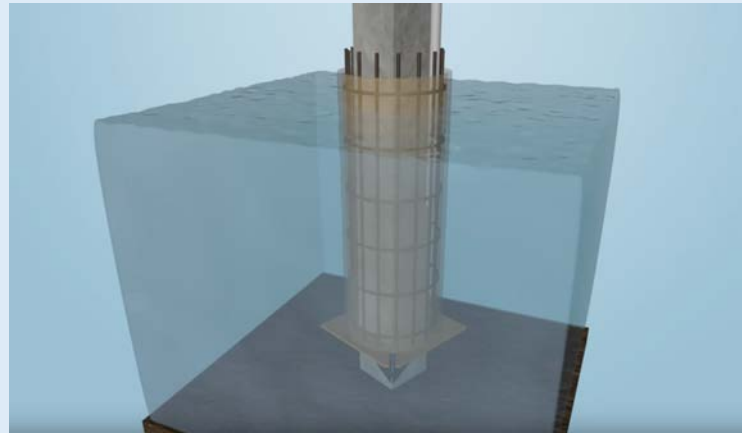
A commercial air impact wrench is used to tighten the clamping bolts (shown below).



Clamp Installation

PILE CLAMP VIDEOS

Visit 4dtechsolutions.com/clamp to see a **3-minute clamp installation** and informational product video



LICENSING OPPORTUNITIES

4D Tech Solutions, Inc. is seeking a licensing partner for this patent pending, easy to build, easy to use system.

If interested, please contact us!

Contact Us

Brad DeRoos, President

443-604-0256

bderoos@4dtechsolutions.com

www.4dtechsolutions.com